

Volume 8 - Signs and Lighting



Volume 8 – Signs and Lighting

Section 1: Traffic Signals and Control Equipment

1 No NRA Addendum:

TD 35 MOVA System of Traffic Control at Signals *Aug 1991*

6 No Advice Notes:

Covering all aspects of traffic signals on high speed roads

Volume 8 – Signs and Lighting

Section 2: Traffic Signs and Road Markings

1 No NRA Addendum:

TD 33/90 Use of Variable Message

Signs *Sept 1990*



4 No Advice Notes and 3 No UK Standards given the status of advice notes:

- Lane gains and drops
- Reflectorisaton of signs
- Passively Safe Posts
- Cattle crossings
- Inspection and maintenance of signs and lines

Volume 8 – Signs and Lighting

Section 3: Lighting

2 No NRA Addenda:

TD 30 Design of Road Lighting for All-Purpose Roads *Dec 1987*

TD 34 Design of Road Lighting for Motorways *Jan 1991*

1 No Advice Note and 1 No UK Standard given the status of advice notes:

- Inspection and maintenance of road lighting
- Appraisal of new and replacement lighting

Volume 8 – Signs and Lighting

Section 4: Traffic Management at Roadworks

2 No Advice Notes:

- Narrow Lanes
- Crossovers

Section 5: Pedestrian Crossings

1 No Advice Note:

- Assessment and Design of Pedestrian Crossings

Volume 9 - Network Traffic Control and Communications



Volume 9 - Network Traffic Control and Communications

The majority of Volume 9 is specific to UK electronic infrastructure specifications and is not implemented for use in Ireland

Section 3: Traffic Control and Surveillance Standards of Provision

1 No NRA Addendum:

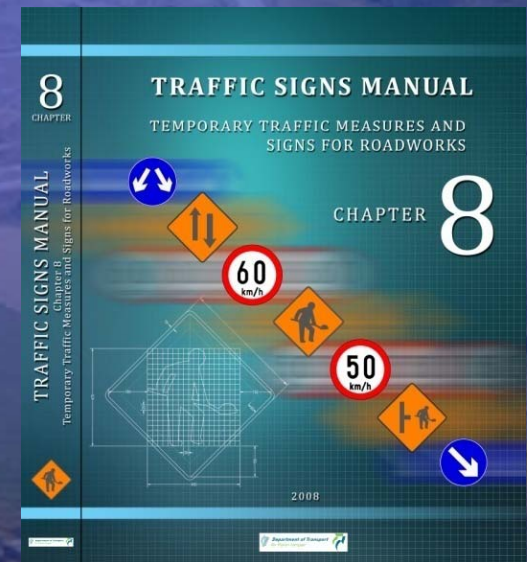
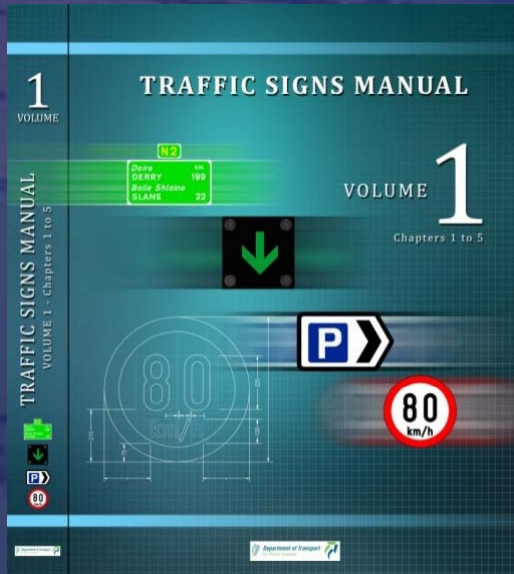
HD 20 Loop Detectors for Motorways *Jan 1992*

1 No Advice Note:

Motorways Overview



The Traffic Signs Manual



LEGAL STATUS

- The Traffic Signs Manual is a direction from the Minister of Transport
- Only signs included in the manual should be used on public roads

NEW LAYOUT

- Consists of three Volumes

- Volume 1 –



Chapter 1 Introduction & Sign Location

Chapter 2 Directional Information Signs

Chapter 3 Variable Message Signs

Chapter 4 Other Information Signs

Chapter 5 Regulatory Signs

- Volume 2 –



Chapter 6 Warning Signs

Chapter 7 Road Markings

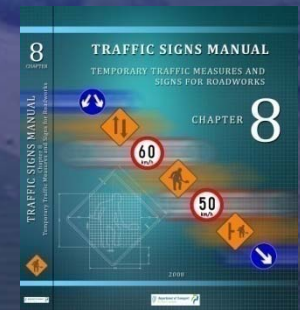
Chapter 8 Temporary Traffic Measures & Signs for Roadworks

Chapter 9 Traffic Signals

Chapter 10 Typical Applications for Traffic Signs and Road Markings

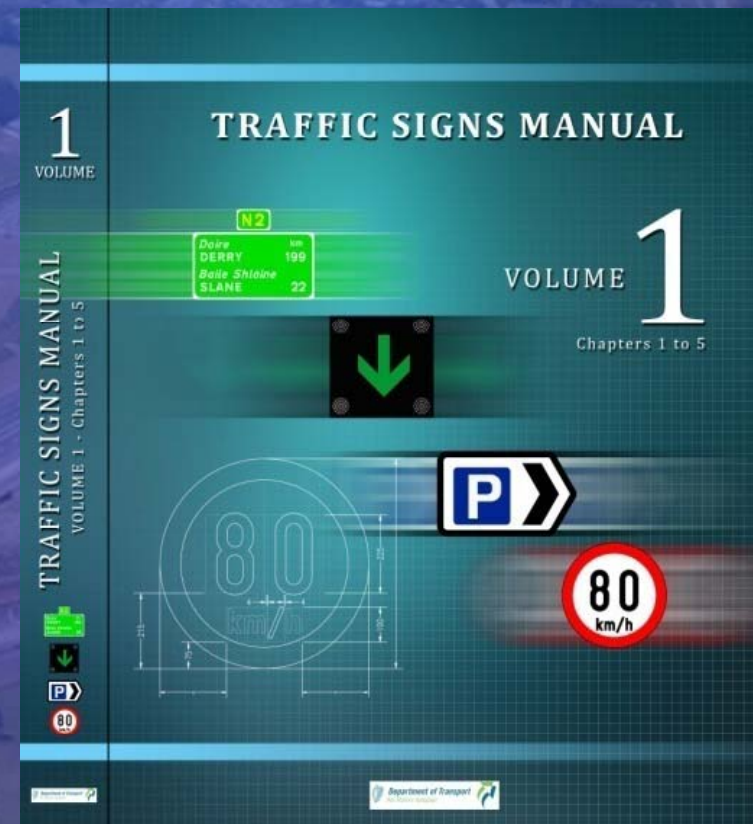
- Chapter 8 -

Temporary Traffic Measures & Signs for Roadworks



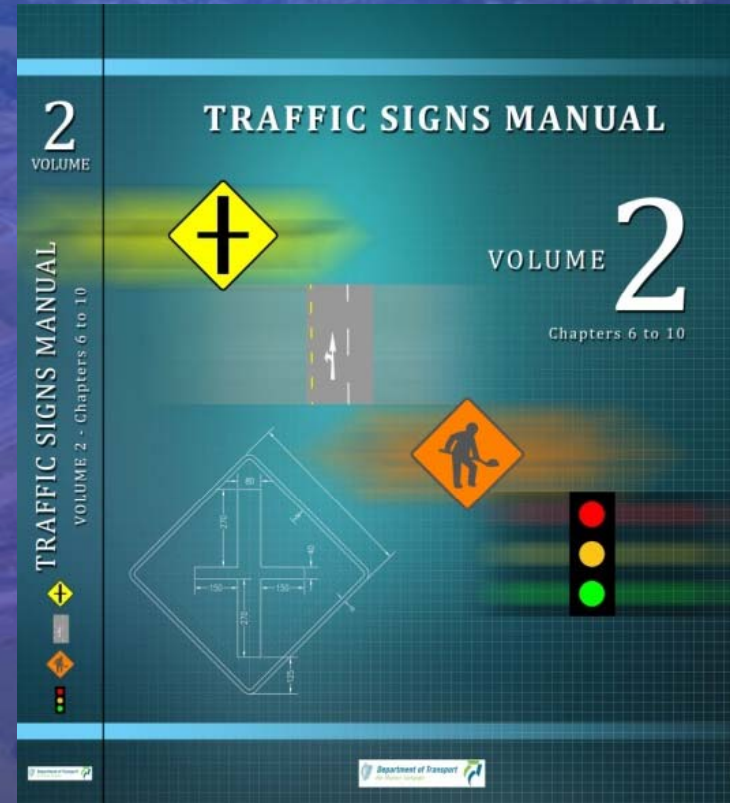
VOLUME 1

- Chapter 1 – Gives information on the positioning of signs
- Chapter 2 – Outlines the design parameters to be used on national and non national directional signs.
- Chapter 3 – Gives guidance for the implementation of Variable Message Signs (VMS).
- Chapter 4 – Defines the other information signs permitted.
- Chapter 5 – Defines the regulatory signs to be used on all roads.

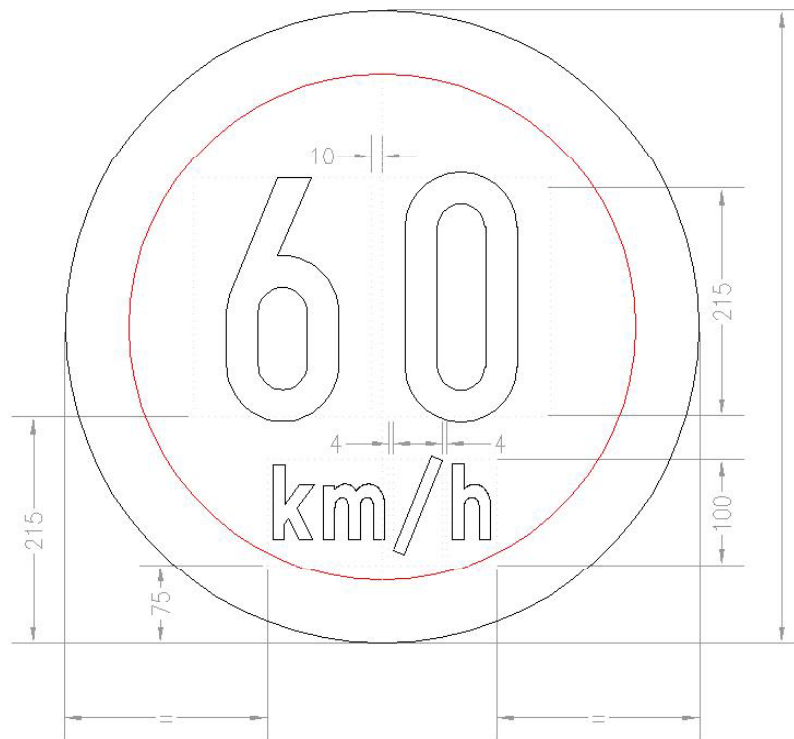


VOLUME 2

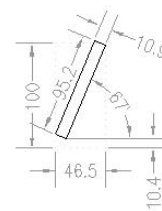
- Chapter 6 – Details the permitted Warning Signs
- Chapter 7 – Details all Road Markings and their use.
- Chapter 8 – Gives the design parameters and signs for Temporary Traffic Measures at Roadworks
- Chapter 9 – Defines the permitted Traffic Signals and their use.
- Chapter 10 – Contains typical layouts showing all the different elements and how they are applied.



RUS042



600
(1200)
(900)
(750)

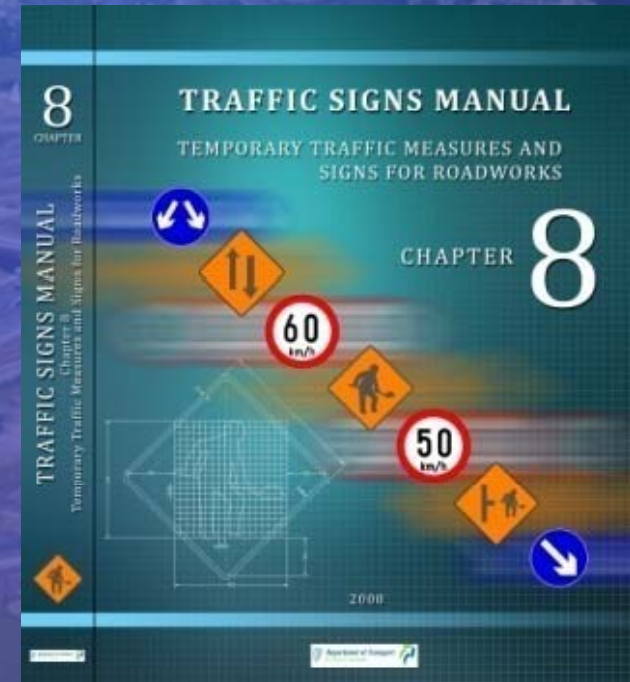


- NOTES: 1. All 600mm sign dimensions shall be varied proportionally for the other sign sizes.
2. Centre line, tile marks and dimensions do not form part of the sign.
3. The numeral legend is from the Transport Motorway alphabet, the units from the Transport Heavy alphabet.
4. Tile widths of the km/h units condensed to 80% standard.
5. The tiles for each digit are butted together and offset to the left by 10mm.
6. COLOURS:—
- | | |
|------------|-------|
| Standard | RED |
| Border | WHITE |
| Background | BLACK |
| Legend | |



CHAPTER 8

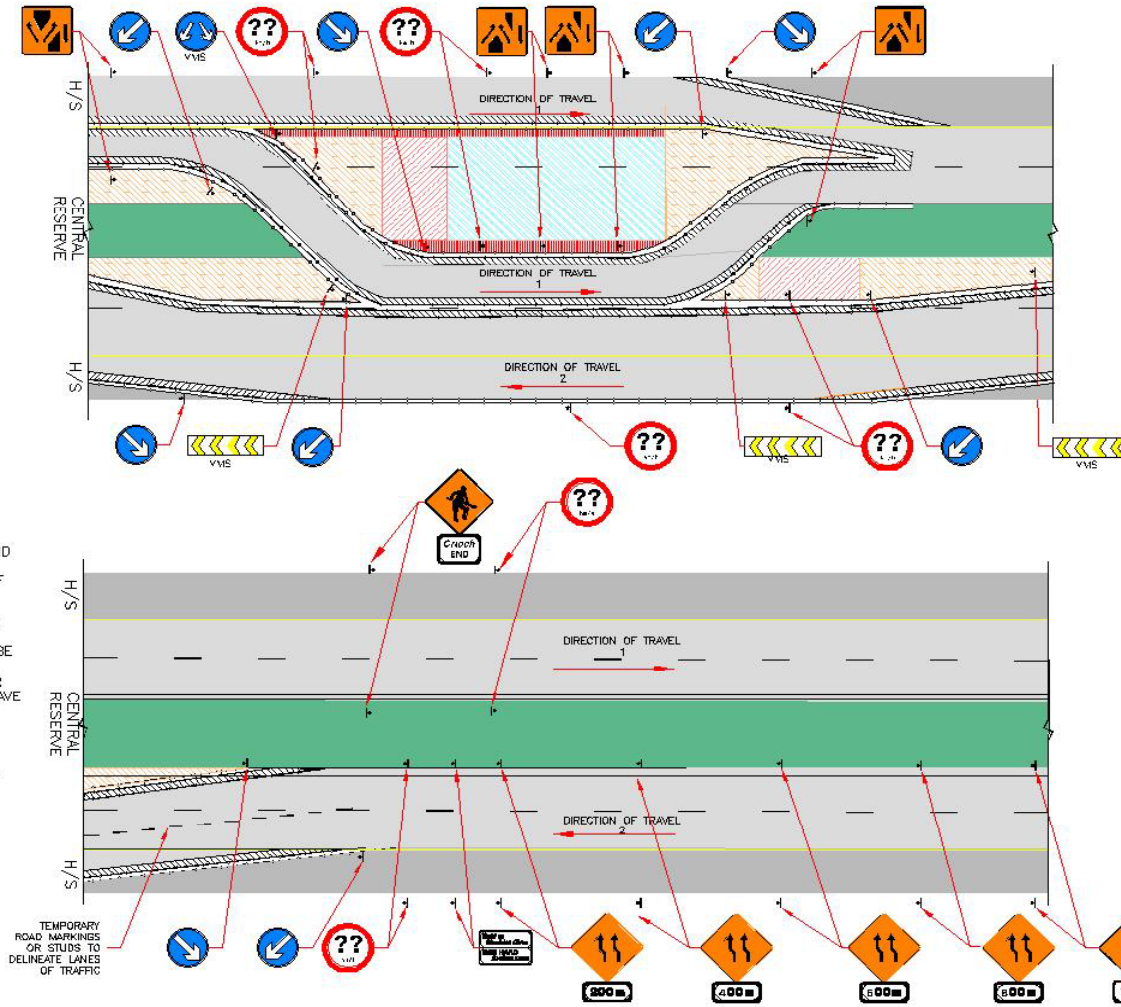
- Chapter 8 – Gives the design parameters and signs for Temporary Traffic Measures at Roadworks
- Divides the network and types of roadwork operations depending on the posted speed limit.
- Provides worked examples of typical roadwork layouts



NOT TO SCALE

LAYOUT FOR SINGLE LANE CONTRA-FLOW CROSSOVER DIRECTION OF TRAVEL 1 & 2 LEVEL 5 & 6

EXAMPLE ONLY
Department of Transport
An tArdán



NOTES:

1. REFER TO TABLE 6.3.5 AND 6.3.6 FOR DIMENSIONS FOR TYPE A, B AND C WORKS.
2. REFER TO TABLE 8.2.1 FOR DEFINITION OF ROADWORK SIGNS.
3. SIGNS SHOULD BE PLACED IN THE VERGE AND CENTRAL RESERVE AND POSITIONED SO AS NOT TO CAUSE AN OBSTRUCTION.
4. ADVANCED SIGNS TO BE PLACED ON MERGE SLIPS IF WITHIN 1KM OF WORKS.
5. FOR TYPICAL MERGE AND DIVERGE SLIPS REFER TO FIGURE 8.4.2.
6. THE USE OF VMS SIGNS DISPLAYING THE FIRST REGULATORY AND OR CHEVRON SIGN IS A REQUIREMENT ON LEVEL 6 ROADS AND IS RECOMMENDED ON ALL OTHER HIGH SPEED ROADS. THE VMS MUST BE ACCOMPANIED BY THE SAME STATIC REGULATORY SIGN.
7. SITE ENTRANCES/EXITS TO BE POSITIONED WITH CLEAR VISIBILITY FOR BOTH THE MAINLINE TRAFFIC AND THE EXITING SITE VEHICLES AND HAVE APPROPRIATE SIGNING.
8. OPERATING SPEED LIMIT TO BE POSTED AT END OF ROADWORKS TO DENOTE END OF THE ROADWORKS SPEED LIMIT.
9. THE SET BACK SHALL BE DEFINED USING A SOLID WHITE LINE OR A LINE OF CLOSELY SPACED TEMPORARY ROAD STUDS.
10. AN INDICATIVE LOCATION FOR A STATUTORY ROADWORKS SPEED LIMIT AND REPEATERS IS SHOWN FOR SITUATIONS WHERE IT MIGHT APPLY.
11. OPERATING SPEED LIMIT TO BE PROVIDED BEYOND THE 'END OF ROADWORKS' SIGN.

FIGURE 8.4.7

NOT TO BE REUSED

NOT TO SCALE

May 2006

129



THE END